



# Study Volunteers Needed!!!

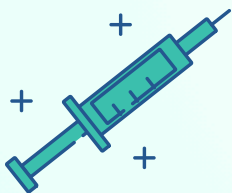
This study is evaluating the safety and pharmacokinetics (how the body absorbs, distributes, and eliminates the drug) of HYR-PB21 compared to standard Bupivacaine HCl Injection. HYR-PB21 is an investigational drug designed to provide prolonged local anesthesia by slowly releasing bupivacaine over time.

## Study Requirements

- Generally Healthy Adults
- Age: 18 - 50
- BMI: 18.0 - 32 Kg/m<sup>2</sup>
- Willing to not use tobacco during the entirety of the study

## Study Information

- One screening Visit
- 7 Overnight Stays
- One outpatient Visit
- Compensation up to \$3,850



**CONTACT US TODAY**



QR Code

Scan



To Apply

📞 P: (877) 298-9071

✉ E: [clinicalrecruitmentdept@frontagelab.com](mailto:clinicalrecruitmentdept@frontagelab.com)

🌐 W: [frontagelab.com/enroll-in-a-study/](http://frontagelab.com/enroll-in-a-study/)

📷 IG: @frontageclinicalservices

💻 FB: Frontage Clinical Services